

Facilities & Planning

Measure A – Monthly Project Construction Update – November 2010

El Dorado High School – New Gymnasium

The brief rain storms experienced last month cost us a few days in the schedule but nothing to alter our overall completion date. The exterior concrete masonry unit (CMU) walls have begun being placed and the vertical steel components are being installed. The budget and schedule remain unchanged with a project completion still slated for early summer 2011.

(Architect – MVE / Construction Manager – TELACU)



El Dorado High School – Video Production Classroom

Finishing touches are being put on the Video Production classroom and studio. Smart classroom equipment has been installed and ceiling tiles are being completed. As soon as the classroom equipment arrives, the space will be ready for occupancy. It is anticipated that transition to the room for students and staff will take place at semester break.

(Architect – PYLUSD / Construction Manager – PYLUSD)



Esperanza High School – New Gymnasium

The brief rain storms experienced last month cost us a few days in the schedule but nothing to alter our overall completion date. The exterior concrete masonry unit (CMU) walls have begun being placed and the vertical steel components are being installed. The budget and schedule remain unchanged with a project completion still slated for early summer 2011.

(Architect – MVE / Construction Manager – TELACU)



Kraemer Middle School – Administration Building Modernization

All interior demolition is complete and reframing along with new system infrastructure is ongoing. Vertical elements for the new building façade are underway with several of the major support columns already standing. Solid progress is being made and the facility should be available for second semester use.

(Architect – HMC / Construction Manager – Parsons/CCM)



Rio Vista Elementary School – MPR & Food Service Expansion

All of the major framing and underground infrastructure components of the MPR and Food Service Expansion have been completed. Rough in for the mechanical, electrical and plumbing (MEP) systems is ongoing. Exterior siding (stucco) will begin this month. Early spring completion is still expected.

(Architect – HMC / Construction Manager – Parsons/CCM)



Rio Vista Elementary School – New 8 Classroom Wing

Good progress has been made on the new classroom wing. Footings, concrete slab floor and all underground infrastructure attendant to the building has been completed. Framing is underway and walls will be erected in early November. The budget and schedule remain unchanged with a project completion still slated for early summer 2011.

(Architect – HMC / Construction Manager – Parsons/CCM)



Van Buren Elementary School – New 8 Classroom Wing

The majority of the wall framing is complete and stacking of the roof components is underway this month. As soon as the roof components are secure, rough in of the mechanical, electrical and plumbing (MEP) will commence. The budget and schedule remain unchanged with a project completion still slated for early summer 2011.

(Architect – HMC / Construction Manager – Parsons/CCM)



Valencia High School – New 17 Classroom Building

All of the classroom components have been received and placed on foundations. Interior finishes are about 70% complete and exterior finishes (stucco and trim) are underway now. Peripheral site work is just beginning and will become more aggressive once the stucco scaffolding can be removed. The elevator component has been installed and is ready to receive exterior finishes. Completion of the facility is still targeted for January 2011.

(Architect – HMC & AMS / Construction Manager – Parsons/CCM)



Yorba Linda High School – New Aquatics Facility

Exterior walls of the equipment / support building have progressed nicely. Roofing of that facility will occur in November which will pave the way for installation of the main pool equipment. Forming for the pool deck area is also in construction now and placement of the cantilevered concrete deck will occur this month. Mid spring completion is still expected.

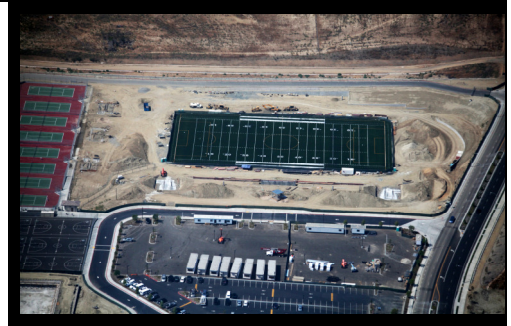
(Architect – WLC / Construction Manager – Parsons/CCM)



Yorba Linda High School – New District Stadium

Construction of Shapell Stadium continues on schedule and on budget. Sports teams, band and color guard continue to use the field for practice. Peripheral facilities continue construction with filed lighting now installed and bleachers, press box, ticket booth, restrooms, concessions and team rooms all being constructed concurrently. Mid spring completion is still anticipated.

(Architect – WLC / Construction Manager – Parsons/CCM)



Construction Update – Esperanza High School Administration Building Modernization and Band/Vocal Room Modernization

While DSA has again slowed progress on the project, final approved plans are expected this month. We are in the final stages of plan review and negotiations with the contractor on both the Admin. Modernization project as well as the Band/Vocal Room Modernization. We will be bringing the formal Lease/Leaseback documents to the Board in December and anticipate demolition activities to begin in January with a project completion for late spring/early summer.

Construction Update – El Camino High School Modernization

Our schedule nemesis continues to be obtaining final approved drawings from DSA. The El Camino project is in DSA now and approvals are expected after the first of the year. We are working with our construction management team now to modify the phasing of the project in which as much “non-DSA” work will be accomplished during the winter and spring months as possible. This work will lead us to a very compressed summer schedule for the actual modernization work that will be required in the two permanent structures. We still hope to place the majority of the relocatable structures during the months prior to summer but can only do so once the DSA plans have been approved.